



“Soft Grout” or “Dog Holes” in grout lines. Are pets really the issue?

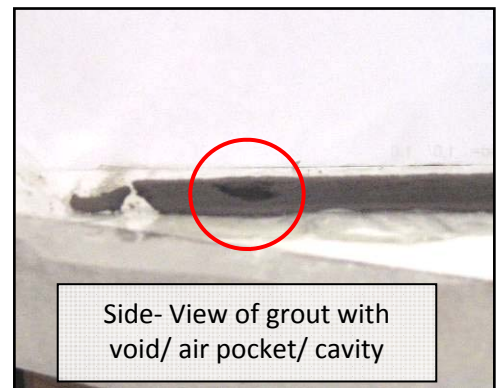
Symptom:

“Soft Grout” or “Dog Holes” in grout lines start to appear in narrow $\frac{1}{8}$ ” – $\frac{1}{4}$ ” joints on floor installations. Mainly issues are seen in walkway and pathway floor areas.

Pets no matter what size or breed are not the cause of holes that appear in the grout joints. Our pet’s toenails only discovers or pierces the voids that are under the surface of the grout due to poor mixing and lack of full application of cement grouts.



Close-up View
of grout



Side- View of grout with
void/ air pocket/ cavity

Causes: Poor grout performance is due to not fully packing/filling the grout into the joint during installation. Other causes can be mixing the grout with a high speed or improper mixing wand that entrains air into the grout thus weakening it. Another cause, and also is also an error in the re-grout or repair is make the grout more fluid or flowable/soupy.

Prevention/ Repair: *narrow $\frac{1}{8}$ ” – $\frac{1}{4}$ ” joints*, will require a paste consistency for the grout when installing and the effort to **completely compact and fill the joint**. Damp cure your grout with clean water mopping once a day for 3- consecutive days after an over-night cure. This will also enhance the hardness of the grout. Remember voids and air-entrain are at the installing stages. The extra time to detail is a great advantage to the longevity and durability of the installation.



Side- View of grout
with air-entrained